

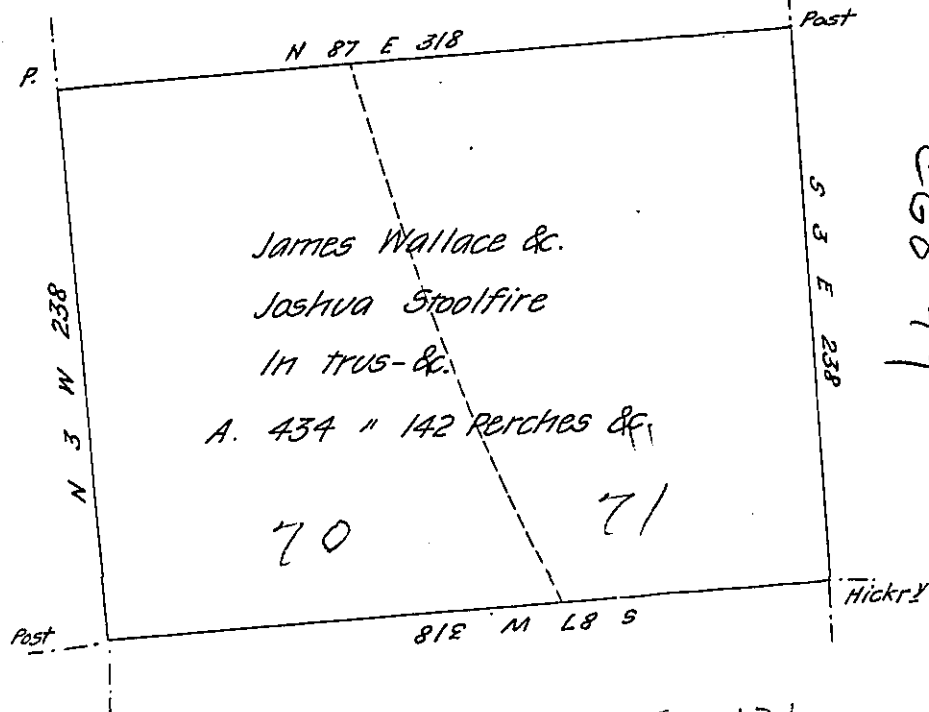
Sample 169 170
H 40-551

Morris Covert

C 42-54

C 140-288

Alexanders District
Depreciation Land



C 68-63

C 83-131

C-210

Matthew Graham & William Graham

74

75

Nicholsons District

A draught of a tract of Land surveyed in Pursuance of a Warrant granted to James Wallace and Joshua Stoolfire Exeors of Benjamin Garvin deceased dated 18th of December A.D. 1817 Containing four hundred and thirty four acres & one hundred and forty two Perches and All^s in Cranberry Township Butler County on the Waters of Brush Creek Executed said Warrant Febr^y 25. 1818.

Barnet Gilleland D.S.

IN TESTIMONY that the above is a copy of the original remaining on file in the Department of Internal Affairs of Pennsylvania, made conformably to an Act of Assembly approved the 16th day of February, 1833, I have hereunto set my Hand and caused the Seal of said Department to be affixed at Harrisburg, this twenty first day of August 1907

Henry Hancock
Secretary of Internal Affairs.